

# THE GRAND

## AT SKY VIEW PARC

ANY PROPOSED CHANGES SHALL BE IMPLEMENTED  
IN STRICT COMPLIANCE WITH DOB REQUIREMENTS  
SUBJECT TO THE TERMS OF THE OFFERING PLAN.

Grand One

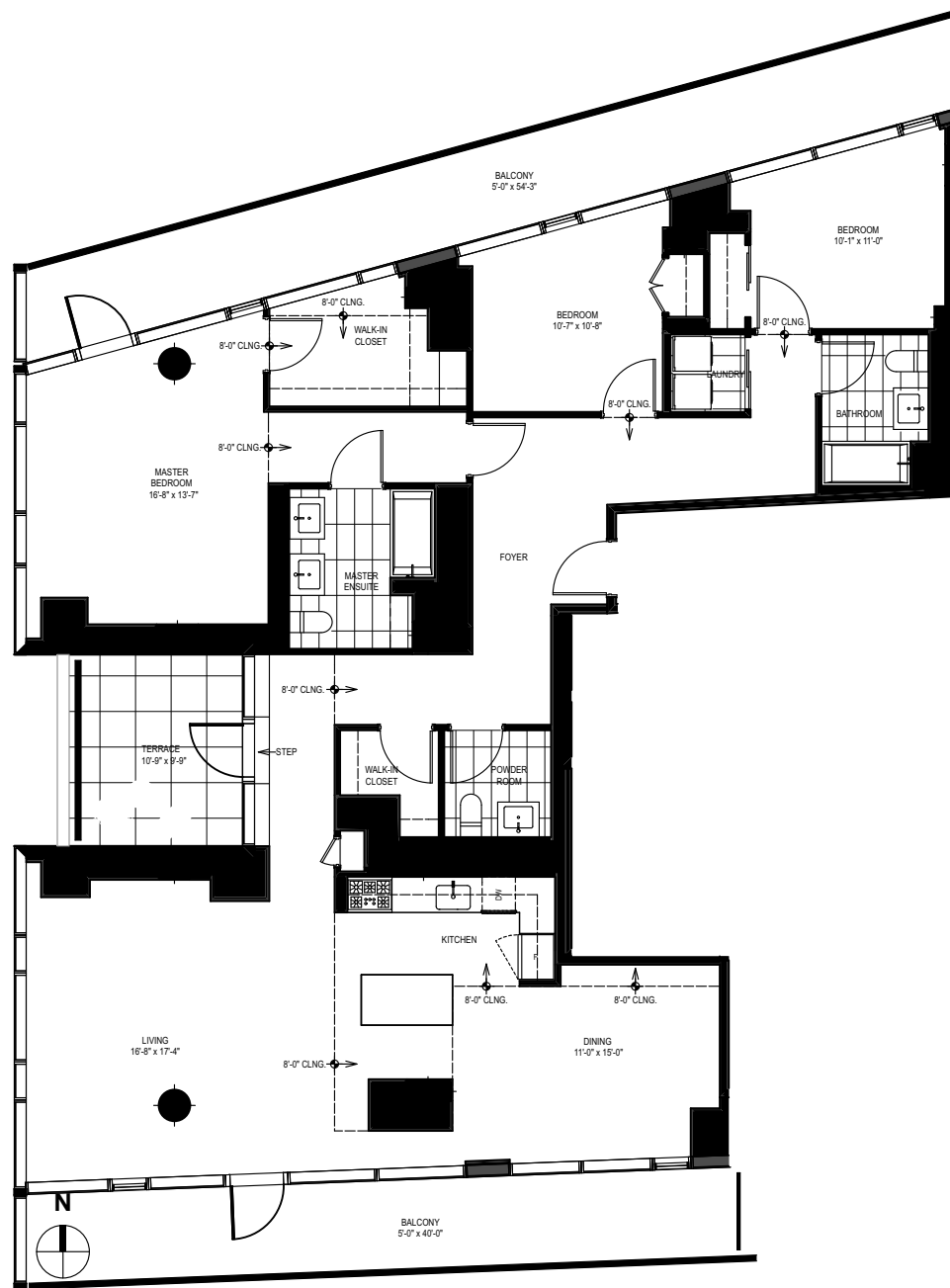
APT. J

LEVEL PH1

3 BEDROOM  
2 1/2 BATHROOM

NET UNIT AREA: 1968 sq.ft | 182.8 m<sup>2</sup>  
GROSS UNIT AREA: 2318 sq.ft | 215.3 m<sup>2</sup>

BALCONY AREA: 472 sq.ft  
TERRACE AREA: 105 sq.ft



APRIL 13, 2016



ALL DIMENSIONS AND CEILING HEIGHTS ARE APPROXIMATE AND SUBJECT TO NORMAL CONSTRUCTION VARIANCES AND TOLERANCES.  
THE PERCENTAGE OF VISION GLASS FOR THE BUILDING TO BE APPROXIMATELY 75% VS. 25% NON-VISION GLASS FOR ALL BUILDING  
GLAZINGS IN THE AGGREGATE. SQUARE FOOTAGE EXCEEDS THE USABLE FLOOR AREA. SPONSOR RESERVES THE RIGHT TO MAKE  
CHANGES IN ACCORDANCE WITH THE OFFERING PLAN.

