

THE GRAND

AT SKY VIEW PARC

ANY PROPOSED CHANGES SHALL BE IMPLEMENTED IN STRICT COMPLIANCE WITH DOB REQUIREMENTS SUBJECT TO THE TERMS OF THE OFFERING PLAN.

Grand Two

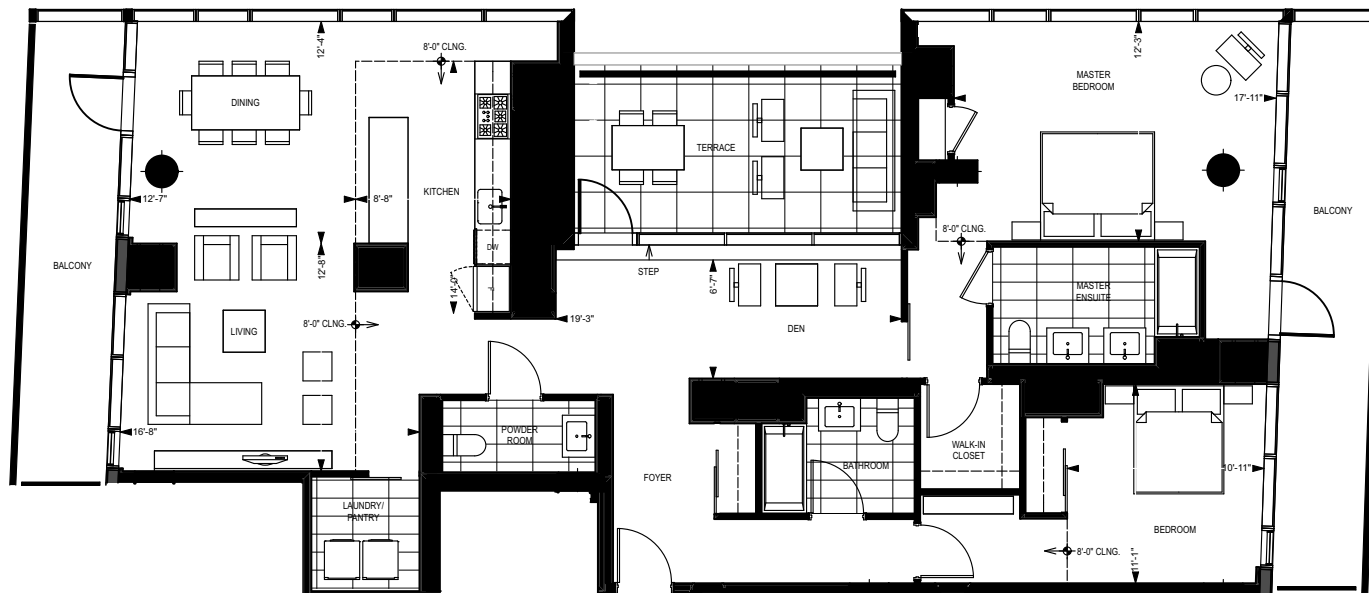
APT. N

LEVEL PH1

2 BEDROOM
2 1/2 BATHROOM
DEN

NET UNIT AREA: 1752 sq.ft | 162.8 m²
GROSS UNIT AREA: 2041 sq.ft | 189.7 m²

BALCONY AREA: 286 sq.ft
TERRACE AREA: 170 sq.ft



NOVEMBER 19, 2015



0 6' 12' 24'

ALL DIMENSIONS AND CEILING HEIGHTS ARE APPROXIMATE AND SUBJECT TO NORMAL CONSTRUCTION VARIANCES AND TOLERANCES. THE PERCENTAGE OF VISION GLASS TO BE APPROXIMATELY 75% VS. 25% NON-VISION GLASS ON ALL GLAZINGS. SQUARE FOOTAGE EXCEEDS THE USABLE FLOOR AREA. SPONSOR RESERVES THE RIGHT TO MAKE CHANGES IN ACCORDANCE WITH THE OFFERING PLAN.

