

## GRAND THREE

### RESIDENCE A FLOOR PH1

3 BEDROOMS • 2 1/2 BATHROOMS

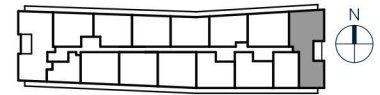
NET UNIT AREA: 1870 SQ. FT / 173.7 M<sup>2</sup>

GROSS UNIT AREA: 2217 SQ. FT / 206 M<sup>2</sup>

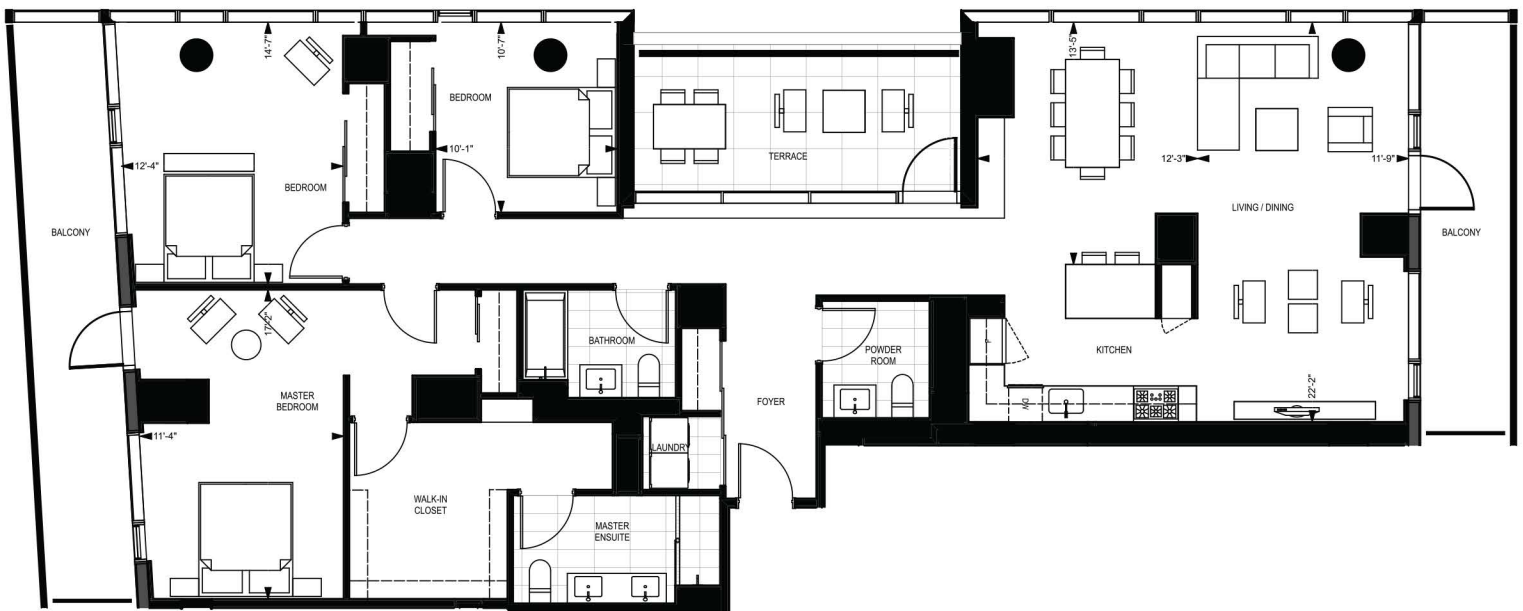
BALCONY AREA: 275 SQ. FT

TERRACE AREA: 150 SQ. FT

ROOFTOP GARDEN



THE GRAND CLUB



SPONSOR: SKY VIEW PARC II, L.P., 712 FIFTH AVENUE, NEW YORK, NY 10019. ALL DIMENSIONS ARE APPROXIMATE AND SUBJECT TO NORMAL CONSTRUCTION VARIANCES AND TOLERANCES. THE PERCENTAGE OF VISION GLASS FOR THE BUILDING TO BE APPROXIMATELY 75% VS. 25% NON-VISION GLASS FOR ALL BUILDING GLAZINGS IN THE AGGREGATE. SQUARE FOOTAGE EXCEEDS THE USABLE FLOOR AREA. THE FURNITURE DEPICTED ON THE FLOOR PLAN IS FOR DEMONSTRATION PURPOSES ONLY AND IS NOT INCLUDED IN THE SALE OF THE UNIT. THE COMPLETE OFFERING TERMS ARE IN AN OFFERING PLAN AVAILABLE FROM SPONSOR. FILE NO. CD15-0390. SPONSOR RESERVES THE RIGHT TO MAKE CHANGES IN ACCORDANCE WITH THE OFFERING PLAN.