

THE GRAND

AT SKY VIEW PARC

ANY PROPOSED CHANGES SHALL BE IMPLEMENTED
IN STRICT COMPLIANCE WITH DOB REQUIREMENTS
SUBJECT TO THE TERMS OF THE OFFERING PLAN.

Grand Three

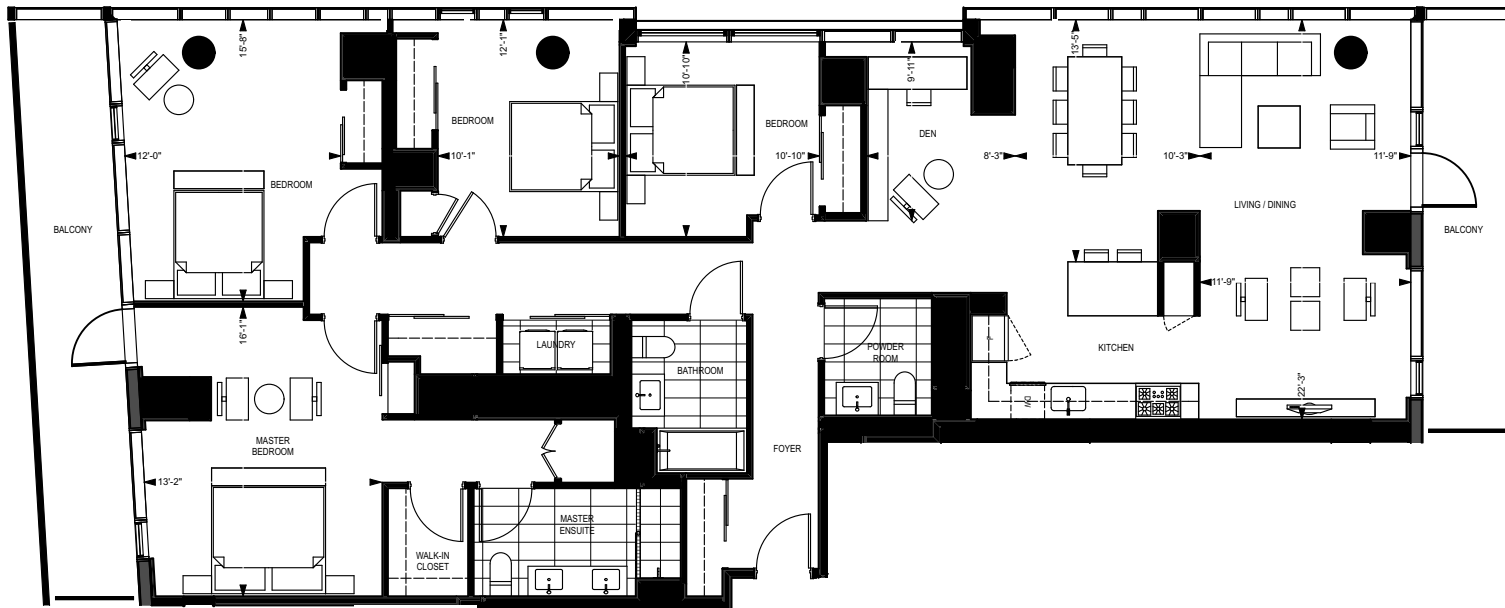
APT. A

LEVELS PH3-PH2

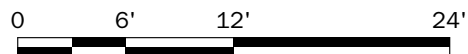
4 BEDROOM
2 1/2 BATHROOM
DEN

NET UNIT AREA: 2048 sq.ft | 190.3 m²
GROSS UNIT AREA: 2428 sq.ft | 225.6 m²

BALCONY AREA: 275 sq.ft



JUNE 21, 2016



ALL DIMENSIONS ARE APPROXIMATE AND SUBJECT TO NORMAL CONSTRUCTION VARIANCES AND TOLERANCES.
THE PERCENTAGE OF VISION GLASS FOR THE BUILDING TO BE APPROXIMATELY 75% VS. 25% NON-VISION GLASS FOR ALL BUILDING
GLAZINGS IN THE AGGREGATE. SQUARE FOOTAGE EXCEEDS THE USABLE FLOOR AREA. SPONSOR RESERVES THE RIGHT TO MAKE
CHANGES IN ACCORDANCE WITH THE OFFERING PLAN.

